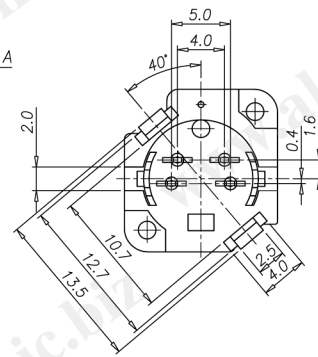
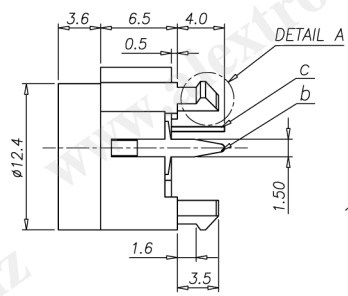
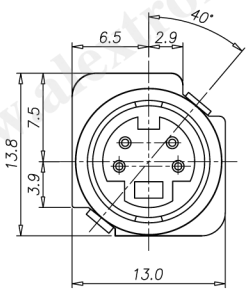


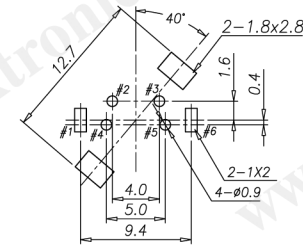
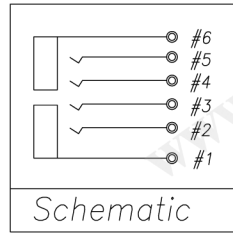
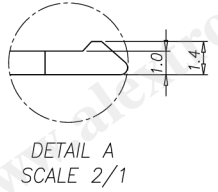
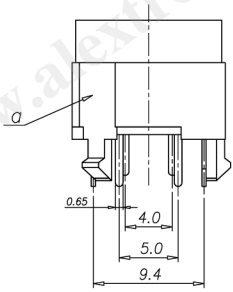
CATEGORY	DESCRIPTION	P/N #
CONNECTOR	MINIDIN 6P, V/A, T/H	MD30AV-11020-006B

REV.	ECN NO	DESCRIPTION	REVISED	DATE
A01		New Release	Lugaun	2009.12.26

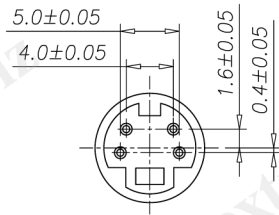


MINIDIN SPECIFICATION:

1. Voltage and Current Rating: DC 12V & 1.0A
2. Contact resistance: 30mΩ MAX.
3. Insulation resistance: 100MΩ MIN. @ DC250V
4. Withstand voltage: 250VAC for 1min
5. Insertion force: 4.5Kgf MAX.
6. Withdraw force: 0.3kgf MIN.
7. Life test: 1,500 cycles



Recommend PCB Layout
Jack Top View
Tolerance: ±0.05
Recommend PCB Thickness 1.6mm



c	Terminal#2,#3,#4,#5	4	Copper Alloy, T=0.40mm	Ag Plating	
b	Terminal#1,#6	2	Copper Alloy, T=0.35mm	CuSn Plating	
a	Housing	1	ABS UL94-HB	Black	
NO.	PART NAME	Q'TY	MATERIAL	PLATING & COLOR	REMARK

UNLESS OTHERWISE SPECIFIED TOLERANCES

DECIMALS:	ANGLES:
X : ±0.5	X : ±2°
X.X : ±0.3	X.X : ±1°
X.XX : ±0.2	

SCALE: 1/1	UNIT: mm	DWG.NO:
SIZE: A3	PAGE: 1 OF 1	REV: A01
APPROVED BY	CHECKED BY	PREPARED BY
WYX	Pengjie	Lugaun
CUSTOMER COPY		